

CCS/CCUS Technology for INPEX

Isao TAKAHASHI





Abu Dhabi



Australia



Indonesia



Japan



Our Mission

We are committed to contributing to the creation of a brighter future for society through our efforts to develop, produce and deliver energy in a sustainable way.

'88-'94: CO2EOR Pilot at Kubiki Field

Shimamoto, 2011



図1 頸城油ガス田

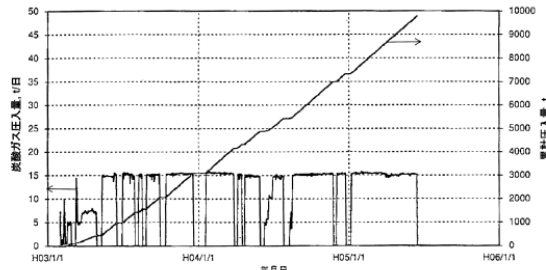


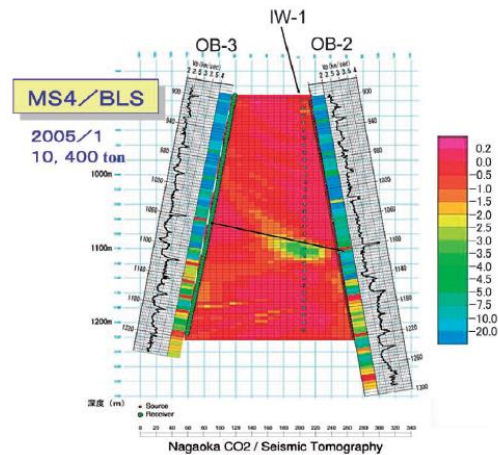
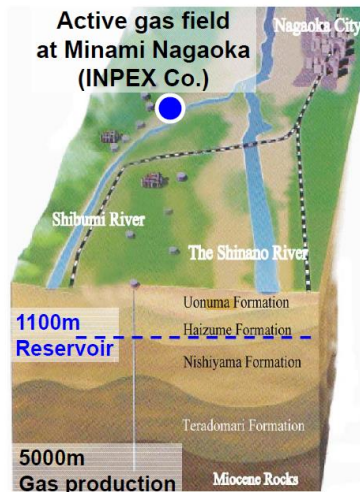
図10 EOR-1号井圧入記録

'01-: CO2EOR Studies for Upper/Lower Zakum Field, Abu Dhabi



'03-'05: CCS Pilot at Iwanohara Site

Xue and Matsuoka, 2008

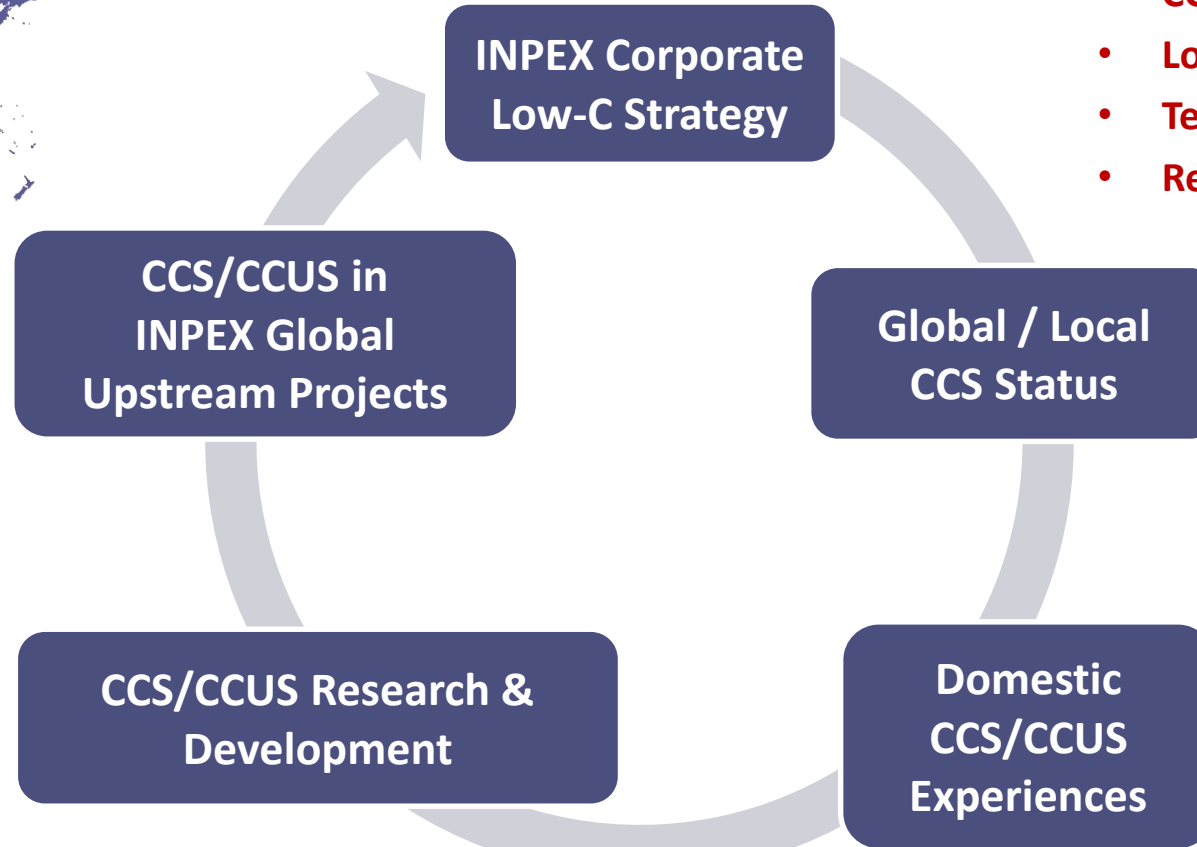


Ichthys LNG Plant @ Darwin, AUS



- **AUSTRALIA**
- **INDONESIA**
- **ABU DHABI**

INPEX Lab @Setagaya



- **CCS Global Data**
- **Local CCS/CCUS Regulations**
- **Technical Standards**
- **Regional Network**

- **EOR Efficiency**
- **CCS Monitoring**
- **CO2-EOR Pilot Projects**

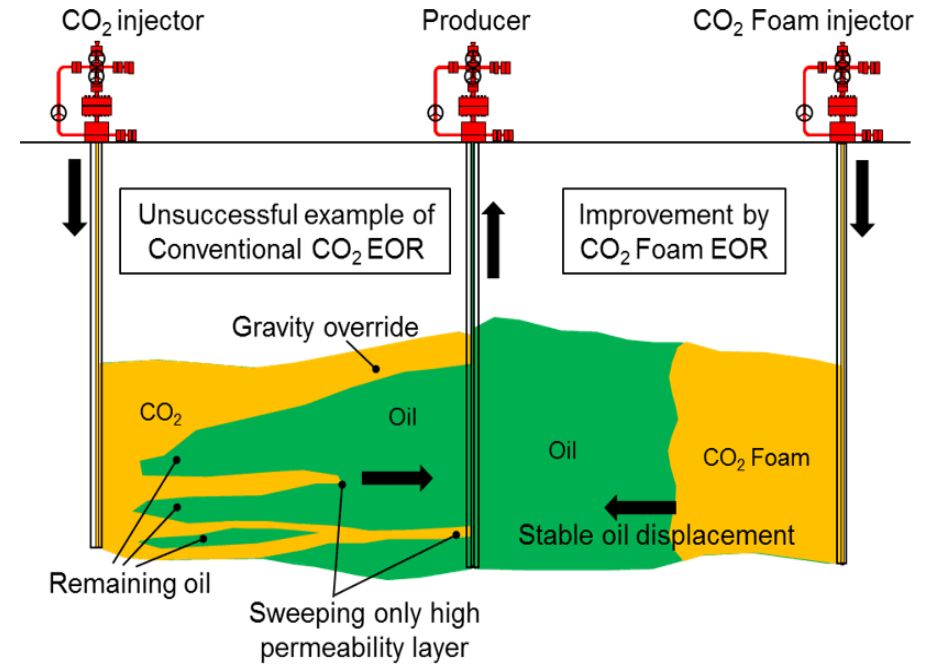
- **CCS Projects**
 - **IWANOHARA**
 - **TOMAKOMAI**
- **Potential Site Studies**



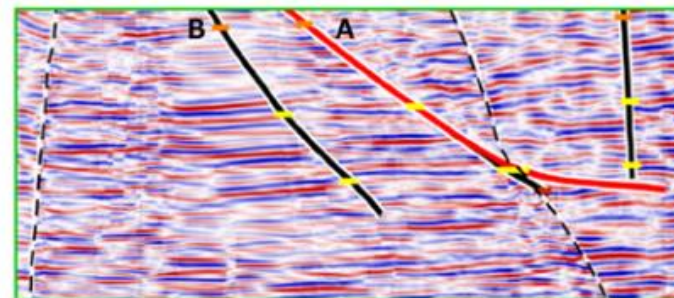
INPEX Technology Deployment Approach



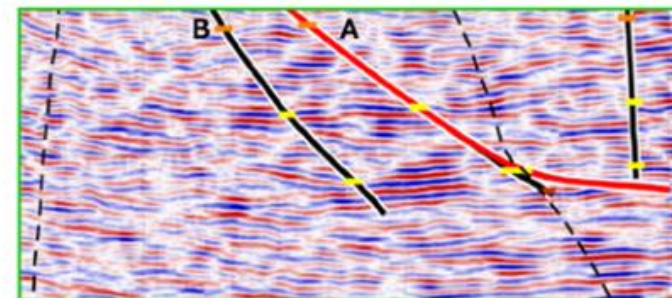
CO2 EOR SWEEP EFFICIENCY with FOAM Technology



MONITORING RESEVOIR with FIBER OPTICS



DAS/VSP (inside dashed lines) inset in 2D seismic section



2D seismic section

From INPEX Homepage

- CCS and CCUS technology are crucial for INPEX to accomplish our Mission, *i.e., Develop, Produce, and Deliver Energy in a Sustainable manner, and transform ourselves to an Energy Provider in the next Age.*
- Amongst available Low-Carbon Strategy options, CCS/CCUS enable us cost-effective reduction of large volume CO₂, taking advantage of our inherent technology, *i.e., subsurface development and CO₂ removal.*
- CCS/CCUS is one of top R&D foci for INPEX, and multi-dimensional efforts are ongoing to make it more practical and efficient, jointly with our partners.
- INPEX is keen to contribute to enhanced application of CCS/CCUS in the Asia-Pacific region, our main battlefield, in collaboration with our domestic/international partners, and appropriate policies and economic incentives will accelerate our move.